



SPORTSMAN BOATS

2018 Simrad Electronics Packages



SportLink™
EQUIPPED



SIMRAD



The SportLink™ Advantage Standard with all Sportsman Boats

Take control of your electronics with SportLink™ Electronics integration System, equipped standard on every Sportsman Boat. The Simrad® powered electronics packages have been carefully designed around each model to meet and exceed your needs out on the water.

This integration combines the electronic systems on your Sportsman Boat to provide you with an easy-to-use command center and an integrated flush “glass helm” dash with incredible power right at your finger tips. From here, you can browse through your music, set your autopilot course, check your fuel consumption, explore underwater with incredible definition, discover points of interest around you, check the weather offshore, and even find birds, all from your Simrad® multi-function display.

The factory installed electronics provide every Sportsman owner with certified factory installations and extended 3-year product warranty on all Simrad units.

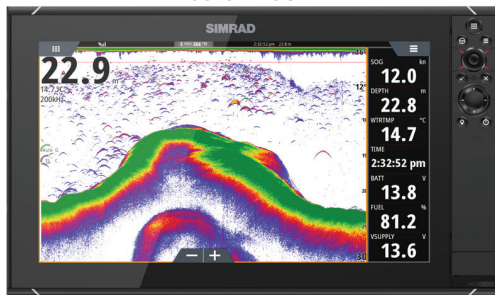
The following pages fully detail each package and available expansion options. Contact your local dealer for more details on how to equip your Sportsman to suit your boating style and needs.





SportLink™ Open 312 Center Console

NSS16 EVO3



NSS16 EVO3



Naviop Digital Switching



Fuel Level Sensor



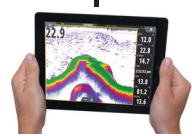
RS35 VHF Radio



Water Level Sensor



SS175M-12° Tilted Element Thru-Hull Transducer



Built-in WiFi

Available Options

STRUCTURESCAN 3D

- Unique 3D Views
- Improved SideScan, DownScan Imaging™



STRUCTURESCAN HD

- DownScan Imaging™
- SideScan Imaging



HALO 4-FOOT OPEN ARRAY RADAR

- True 64nm Range
- Beam Sharpening and Target Separation Control



BROADBAND 4G RADAR

- Beam Sharpening
- Advanced Target Detection



OPTIMUS AUTOPILOT & PRECISION-9 COMPASS

- Steer to waypoint, heading or set turn pattern
- Solid State Sensor



WR10 AUTOPILOT REMOTE

- Dedicated Standby and engage buttons
- Up to 30m Range



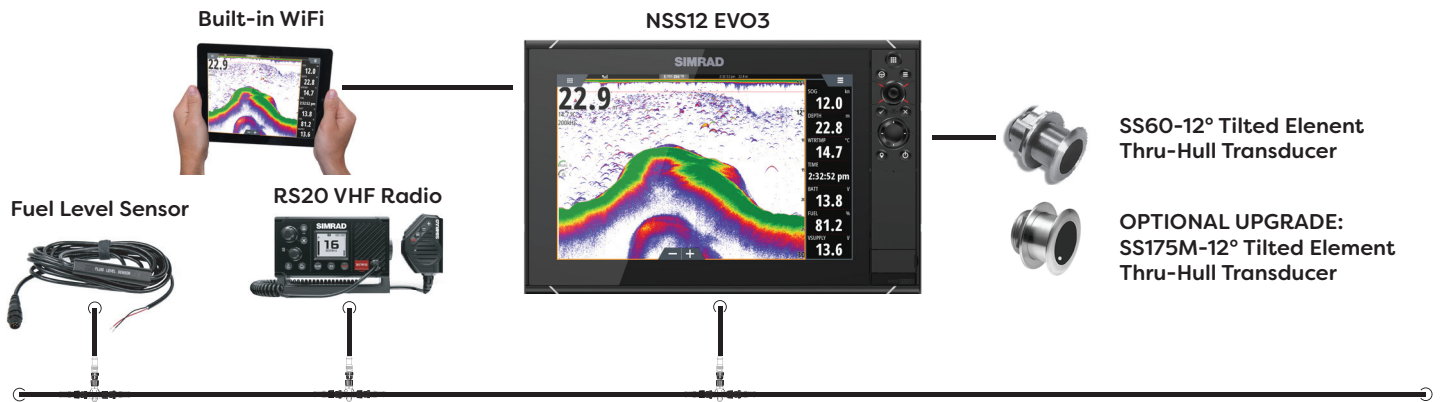
WM-3 WEATHER MODULE

- NOAA Marine Zone Forecasts
- NOWrad™ Weather Radar
- Ethernet Connectivity





SportLink™ Heritage 251, Open 252, 282, 282TE & Masters 267



Available Options

NSS12 EVO3 (SECOND HELM DISPLAY)



OPTIMUS AUTOPILOT & PRECISION-9 COMPASS

- Steer to waypoint, heading or set turn pattern
- Solid State Sensor



STRUCTURESCAN 3D

- Unique 3D Views
- Improved SideScan, DownScan Imaging™



WR10 AUTOPILOT REMOTE

- Dedicated Standby and engage buttons
- Up to 30m Range



STRUCTURESCAN HD

- DownScan Imaging™
- SideScan Imaging



WM-3 WEATHER MODULE

- NOAA Marine Zone Forecasts
- NOWrad™ Weather Radar
- Ethernet Connectivity



HALO 3-FOOT OPEN ARRAY RADAR

- True 48nm Range
- Beam Sharpening and Target Separation Control



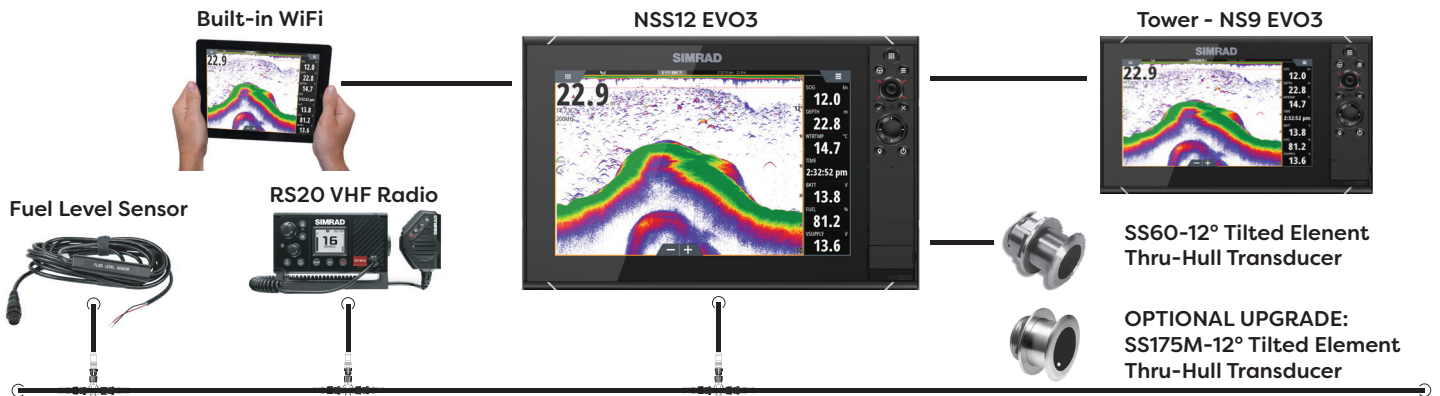
BROADBAND 4G RADAR

- Beam Sharpening
- Advanced Target Detection





SportLink™ Heritage 251, Open 252, 282, 282TE & Masters 267 w/ Half Tower



Available Options

NSS12 EVO3 (SECOND HELM DISPLAY)



STRUCTURESCAN 3D

- Unique 3D Views
- Improved SideScan, DownScan Imaging™



STRUCTURESCAN HD

- DownScan Imaging™
- SideScan Imaging



BROADBAND 4G RADAR

- Beam Sharpening
- Advanced Target Detection



OPTIMUS AUTOPILOT & PRECISION-9 COMPASS

- Steer to waypoint, heading or set turn pattern
- Solid State Sensor



WR10 AUTOPILOT REMOTE

- Dedicated Standby and engage buttons
- Up to 30m Range



WM-3 WEATHER MODULE

- NOAA Marine Zone Forecasts
- NOWrad™ Weather Radar
- Ethernet Connectivity



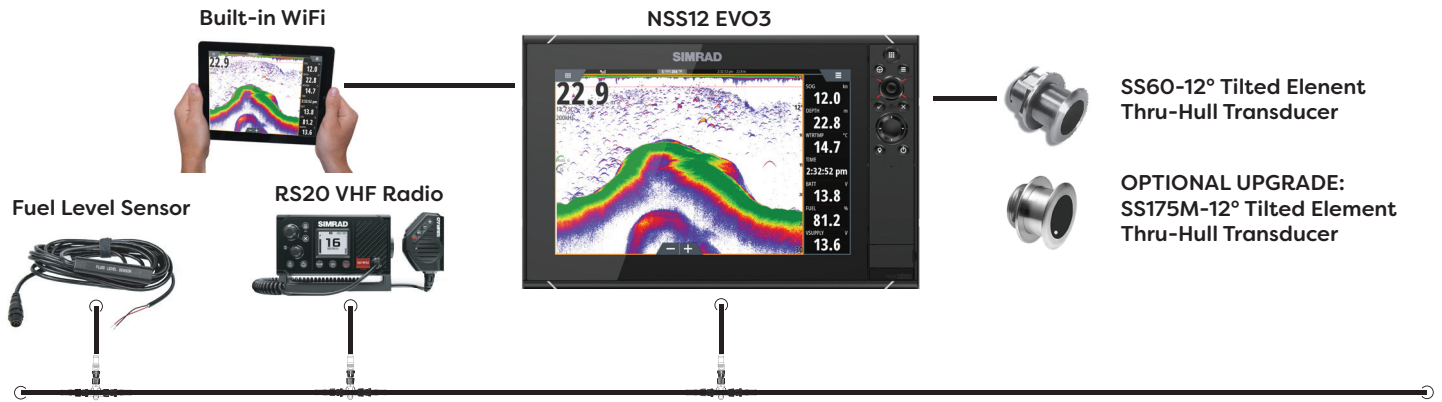


SPORTSMAN

YAMAHA



SportLink™ Heritage 241 & Open 242



Available Options

NSS12 EVO3 (SECOND HELM DISPLAY)



STRUCTURESCAN 3D

- Unique 3D Views
- Improved SideScan, DownScan Imaging™



STRUCTURESCAN HD

- DownScan Imaging™
- SideScan Imaging



BROADBAND 4G RADAR

- Beam Sharpening
- Advanced Target Detection



OPTIMUS AUTOPILOT & PRECISION-9 COMPASS

- Steer to waypoint, heading or set turn pattern
- Solid State Sensor



NAC2 AUTOPILOT KIT WITH RPU80

- Solenoid drive capability
- Solid State Sensor
- NMEA 2000 connectivity



WR10 AUTOPILOT REMOTE

- Dedicated Standby and engage buttons
- Up to 30m Range



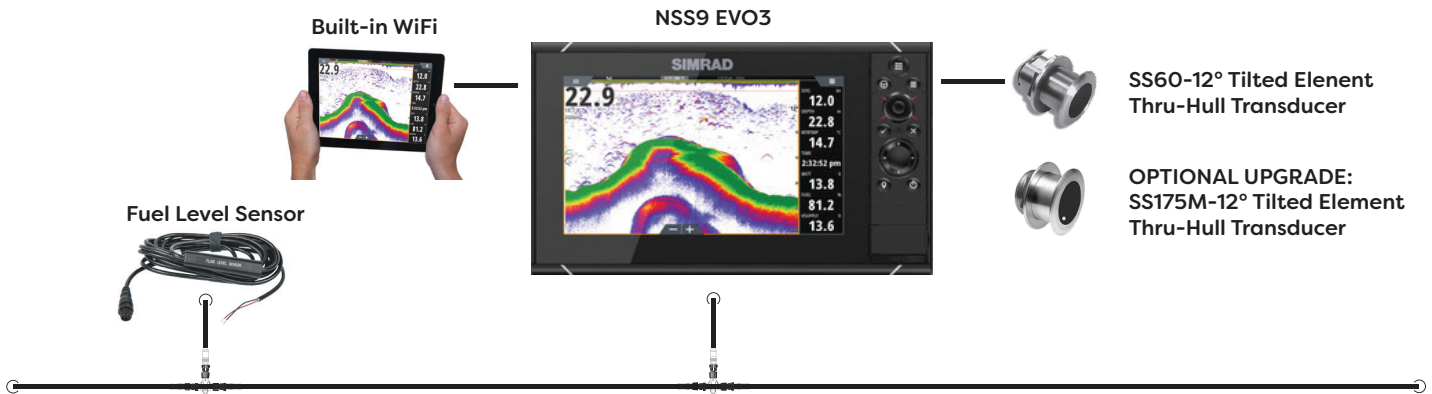
WM-3 WEATHER MODULE

- NOAA Marine Zone Forecasts
- NOWrad™ Weather Radar
- Ethernet Connectivity



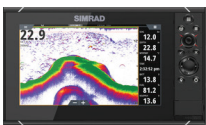


SportLink™ Heritage 211 & 231, Open 212 & 232



Available Options

NSS9 EVO3 (SECOND HELM DISPLAY)



NSS12 EVO3 (UPGRADE TO SINGLE DISPLAY)



STRUCTURESCAN 3D

- Unique 3D Views
- Improved SideScan, DownScan Imaging™



STRUCTURESCAN HD

- DownScan Imaging™
- SideScan Imaging



RS20 VHF RADIO

- DSC Capability Class D
- Dual and Tri Watch function
- NMEA 2000 compatible



BROADBAND 4G RADAR

- Beam Sharpening
- Advanced Target Detection



NAC2 AUTOPILOT KIT WITH RPUB0

- Solenoid drive capability
- Solid State Sensor
- NMEA 2000 connectivity



WR10 AUTOPILOT REMOTE

- Dedicated Standby and engage buttons
- Up to 30m Range



WM-3 WEATHER MODULE

- NOAA Marine Zone Forecasts
- NOWrad™ Weather Radar
- Ethernet Connectivity



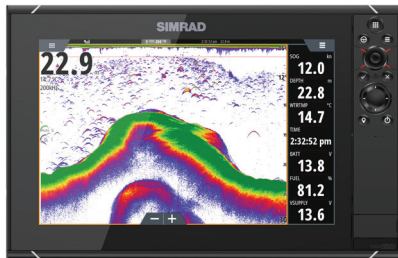


SportLink™ Masters 247 Bay Boat

Built-in WiFi



NSS12 EVO3



Fuel Level Sensor



SS60-12° Tilted Element Thru-Hull Transducer



OPTIONAL UPGRADE: SS175M-12° Tilted Element Thru-Hull Transducer

Available Options

NSS12 EVO3 (SECOND HELM DISPLAY)



STRUCTURESCAN 3D

- Unique 3D Views
- Improved SideScan, DownScan Imaging™



STRUCTURESCAN HD

- DownScan Imaging™
- SideScan Imaging



RS20 VHF RADIO

- DSC Capability Class D
- Dual and Tri Watch function
- NMEA 2000 compatible



BROADBAND 4G RADAR

- Beam Sharpening
- Advanced Target Detection



OPTIMUS AUTOPILOT & PRECISION-9 COMPASS

- Steer to waypoint, heading or set turn pattern
- Solid State Sensor



NAC2 AUTOPILOT KIT WITH RPUB0

- Solenoid drive capability
- Solid State Sensor
- NMEA 2000 connectivity



WR10 AUTOPILOT REMOTE

- Dedicated Standby and engage buttons
- Up to 30m Range



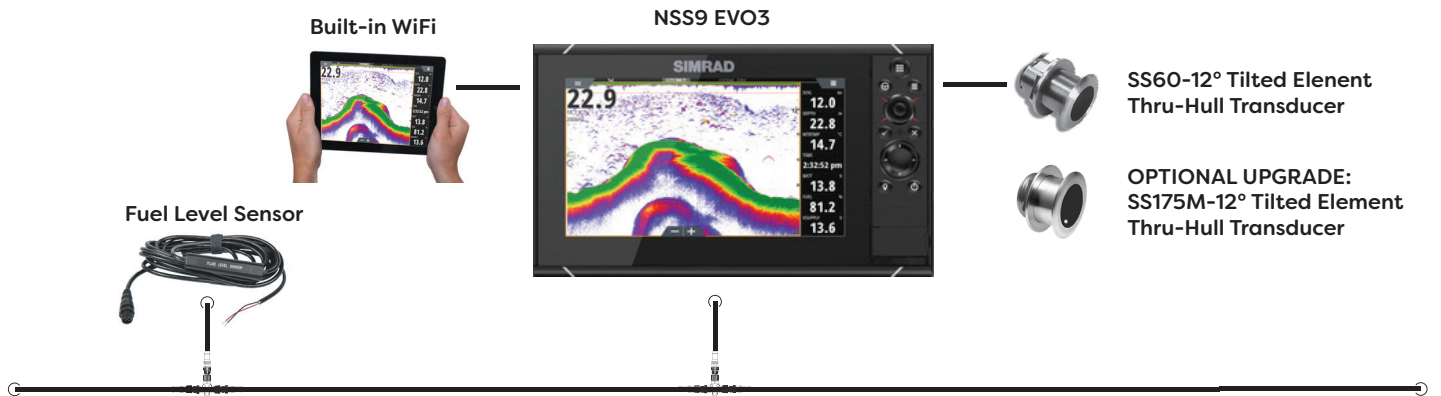
WM-3 WEATHER MODULE

- NOAA Marine Zone Forecasts
- NOWrad™ Weather Radar
- Ethernet Connectivity



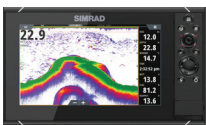


SportLink™ Masters 227 Bay Boat & Tournament 234 Bay Boat



Available Options

NSS9 EVO3 (SECOND HELM DISPLAY)



- BROADBAND 4G RADAR**
- Beam Sharpening
 - Advanced Target Detection



NSS12 EVO3 (UPGRADE TO SINGLE DISPLAY)



- OPTIMUS AUTOPILOT & PRECISION-9 COMPASS**
- Steer to waypoint, heading or set turn pattern
 - Solid State Sensor



STRUCTURESCAN 3D

- Unique 3D Views
- Improved SideScan, DownScan Imaging™



NAC2 AUTOPILOT KIT WITH RPU80

- Solenoid drive capability
- Solid State Sensor
- NMEA 2000 connectivity



STRUCTURESCAN HD

- DownScan Imaging™
- SideScan Imaging



WR10 AUTOPILOT REMOTE

- Dedicated Standby and engage buttons
- Up to 30m Range



RS20 VHF RADIO

- DSC Capability Class D
- Dual and Tri Watch function
- NMEA 2000 compatible



WM-3 WEATHER MODULE

- NOAA Marine Zone Forecasts
- NOWrad™ Weather Radar
- Ethernet Connectivity

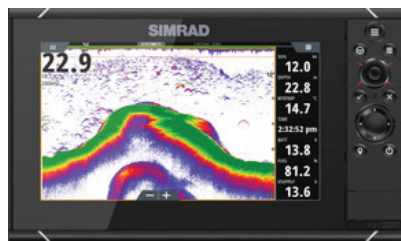




SportLink™ Masters 207 Bay Boat & Tournament 214 Bay Boat

Built-in WiFi

NSS9 EVO3



Fuel Level Sensor



SS60-12° Tilted Element Thru-Hull Transducer



Available Options

STAINLESS STEEL THRU-HULL TRANSDUCER

- SS175M-12° Tilted Element Thru-Hull Transducer



STRUCTURESCAN 3D

- Unique 3D Views
- Improved SideScan, DownScan Imaging™



STRUCTURESCAN HD

- DownScan Imaging™
- SideScan Imaging



RS20 VHF RADIO

- DSC Capability Class D
- Dual and Tri Watch function
- NMEA 2000 compatible



WM-3 WEATHER MODULE

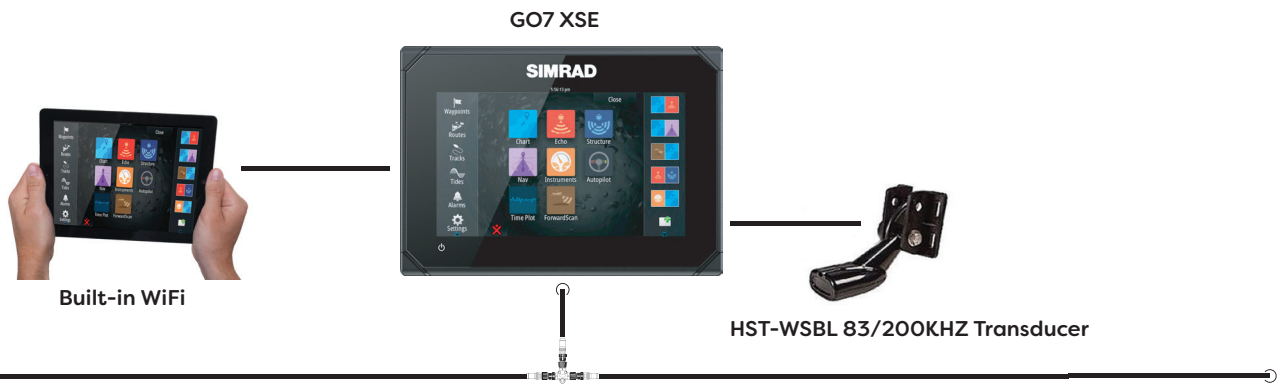
- NOAA Marine Zone Forecasts
- NOWrad™ Weather Radar
- Ethernet Connectivity

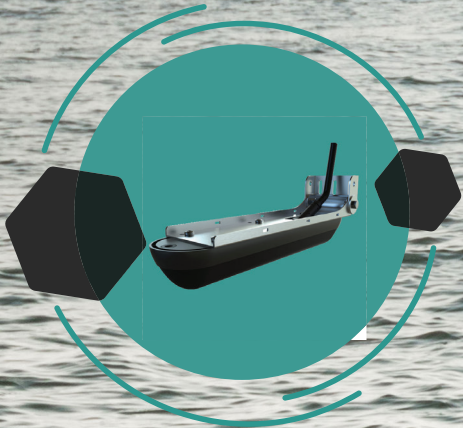
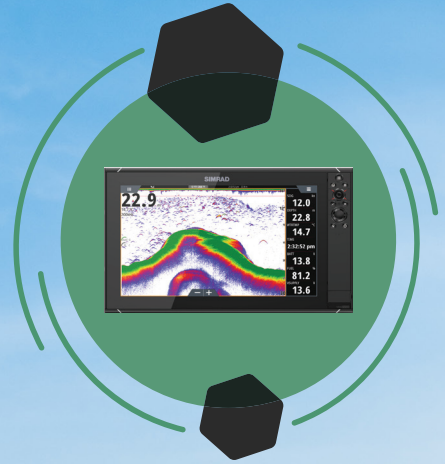
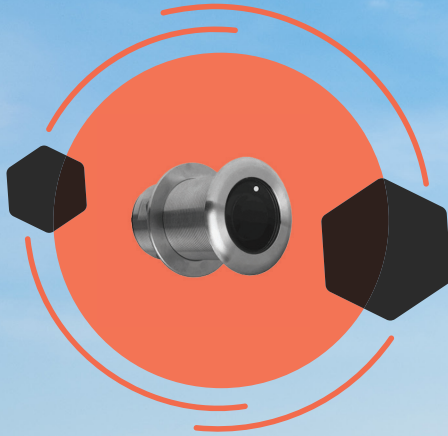






SportLink™ Island Reef & Island Bay Series Boats



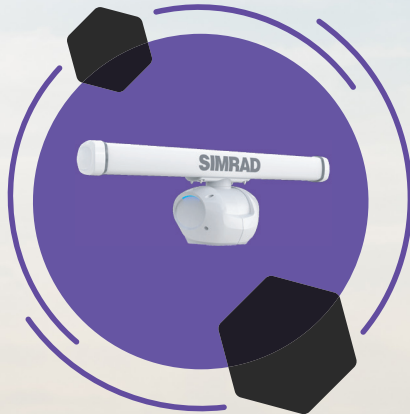


Simrad's 50 year heritage is one of constant innovation, and our partnership with Sportsman Boats is a reflection of that joint philosophy: advanced boat design, world-class manufacturing, latest breakthrough technologies. We are delighted and honored to be the exclusive marine electronics partner to the Sportsman Boat brand offering the latest state of the art technologies like the Simrad Halo radar technology and stylish integrated flat "glass helm" designs. The future of our partnership looks promising and poised for continued mutual growth, with Sportsman as a market leader in boat designs and Simrad at the helm as the trusted choice for marine electronics.

– Marc Jourlait, Deputy CEO, NAVICO



For more information and video tutorials, navigate to www.sportsmanboatsmfg.com/sportlink-simrad



SIMRAD®



www.sportsmanboatsmfg.com



The information provided is intended for informational purposes only and is subject to change without notice. Information may be changed or updated without notice. Sportsman Boats may also make improvements and/or changes in the products, pricing and/or the programs described in this information at any time without notice, contact your local dealer for details. Specifications are approximations and are subject to variances. Boats pictured may be shown with optional equipment not included as a standard feature.

This catalog contains many of the valuable Sportsman branding and trademarks used throughout the world. All rights reserved. May not distribute, modify or alter without written consent from Sportsman Boats MFG, Inc. The Sportsman logo, SportLink™ and SportTech™ are trademarks of Sportsman Boats.

Remember to always observe all applicable boating laws. Never drink and drive. Dress properly with a USCG-approved personal flotation device and protective gear.

Boat smart from the start. Take a boating safety course and get a free vessel safety check annually for your boat. For more information, contact: United States Coast Guard Auxiliary online at www.cgaux.org.

Partners

Sportsman Boats is a proud partner of Simrad. All Simrad electronics factory installed will get an additional year of product warranty. This gives you a total of 3 years of Simrad product warranty and 2 years of Simrad onboard support. This added value is FREE to all new Sportsman Boats and is just another reason to buy a Sportsman Boat.

All Sportsman Boats are NMMA Certified using the American Boat & Yacht Council (ABYC) standards. For full details, navigate to www.sportsmanboatsmfg.com/nmma.

For the name of your nearest Sportsman Boats dealer or for more information on our complete line of boats, please visit us at www.sportsmanboatsmfg.com/find-a-dealer or call us at 843.376.2628.