

TEST CONDITIONS

Test Date	2/28/2023
Test Conductor	Anton Francois +2
Boat Weight as Tested (lbs)	12305
Air Temperature (degrees F)	77
Elevation (ft)	0
Sea State	Choppy
Wind Velocity range (mph)	15
Fresh/Salt Water	Saltwater
Fuel Level at Testing (gal)	110

ENGINE SPECIFICATIONS

Number of Engines	2
Engine	V8 Verado
Horsepower	300
Cylinders	8
Drive or gear model and ratio	HD Camber 1.85
Mounting Bolt Hole	1,1
Engine Height (in)	1.0,1.0
Engine Setback (in)	1.0,1.0
Engine Length (in)	25,25

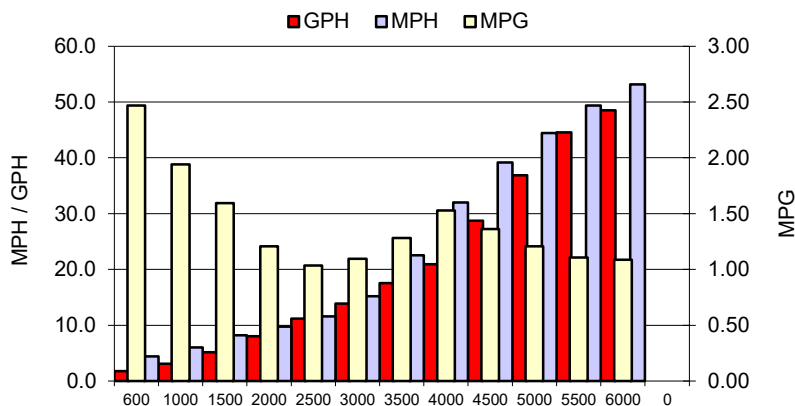
PERFORMANCE SUMMARY

Top Speed (mph @ rpm)	53.1	6000
Acceleration 0 - 20 mph (seconds)	5.09	
Acceleration 0 - 30 mph (seconds)	8.21	

PROPELLER SPECIFICATIONS

Mercury Name	Eneria ECO
Material	Stainless Steel
Pitch	19.0,19.0
Number of Blades	3

PERFORMANCE CURVE



BOAT SPECIFICATIONS

Region/s sold	
Manufacturer	sportsmansboats
Website	
Boat Model	322
Boat Type	Offshore Saltwater
Material	0
Length (ft)	32.2
Beam (ft)	10.9
Max hp Capacity	0
Fuel Tank Capacity (gal)	305
Steering Type	Joystick
Dry Boat Weight (lbs)	9185

PERFORMANCE DATA

RPM	SPEED	FUEL CONSUMPTION	FUEL CONSUMPTION	RANGE
RANGE	MPH	GPH	MPG	MILES
600	4.4	1.8	2.47	753
1000	6.0	3.1	1.94	592
1500	8.2	5.1	1.60	487
2000	9.7	8.1	1.21	368
2500	11.6	11.2	1.04	316
3000	15.2	13.9	1.10	334
3500	22.5	17.6	1.28	391
4000	32.0	20.9	1.53	466
4500	39.2	28.8	1.36	416
5000	44.5	36.9	1.21	368
5500	49.4	44.6	1.11	338
6000	53.1	48.5	1.09	332
0	0.0	0.0	0.0	0
0	0.0	0.0	0.0	0