

TEST CONDITIONS

Test Date	5/2/2023
Test Conductor	anton francois + 2
Boat Weight as Tested (lbs)	11525
Air Temperature (degrees F)	72
Elevation (ft)	0
Sea State	choppy
Wind Velocity range (mph)	15
Fresh/Salt Water	Saltwater
Fuel Level at Testing (gal)	100

ENGINE SPECIFICATIONS

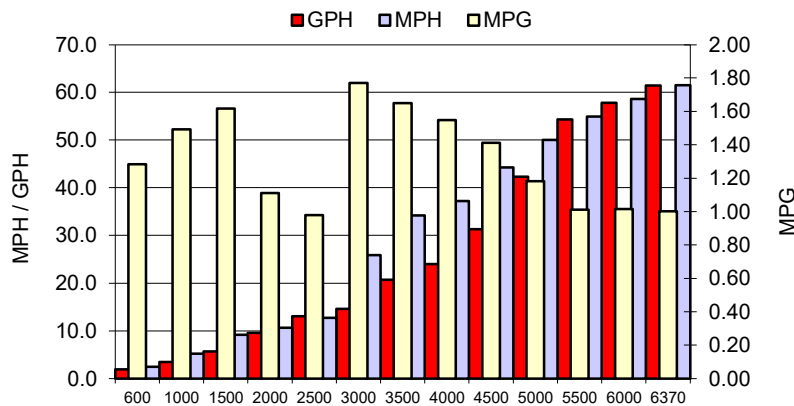
Number of Engines	2
Engine	V10 Verado
Horsepower	350
Cylinders	10
Drive or gear model and ratio	Standard 2.08
Mounting Bolt Hole	5,5
Engine Height (in)	1.0,1.0
Engine Setback (in)	1.0,1.0
Engine Length (in)	25,25

PERFORMANCE SUMMARY

Top Speed (mph @ rpm)	61.5	6370
Acceleration 0 - 20 mph (seconds)	4.52	
Acceleration 0 - 30 mph (seconds)	6.81	

PROPELLER SPECIFICATIONS

Mercury Name	Revolution X
Material	Stainless Steel
Pitch	23,23
Number of Blades	4

PERFORMANCE CURVE

BOAT SPECIFICATIONS

Region/s sold	
Manufacturer	Sportsman
Website	
Boat Model	302
Boat Type	Offshore Saltwater
Material	Material
Length (ft)	30.2
Beam (ft)	10.4
Max hp Capacity	800
Fuel Tank Capacity (gal)	270
Steering Type	joystick
Dry Boat Weight (lbs)	8245

PERFORMANCE DATA

RPM	SPEED	FUEL CONSUMPTION	FUEL CONSUMPTION	RANGE
RANGE	MPH	GPH	MPG	MILES
600	2.4	1.9	1.28	347
1000	5.2	3.5	1.49	403
1500	9.2	5.7	1.62	436
2000	10.6	9.6	1.11	300
2500	12.8	13.0	0.98	264
3000	25.8	14.6	1.77	478
3500	34.2	20.7	1.65	445
4000	37.2	24.0	1.55	418
4500	44.2	31.3	1.41	381
5000	50.0	42.3	1.18	319
5500	54.9	54.3	1.01	273
6000	58.6	57.8	1.01	274
6370	61.5	61.4	1.00	270
0	0.0	#REF!	0.0	0

This data is internal to Brunswick.