

**TEST CONDITIONS**

Test Date	3/16/2023
Test Conductor	Anton Francois +3
Boat Weight as Tested (lbs)	11375
Air Temperature (degrees F)	57
Elevation (ft)	0
Sea State	Calm
Wind Velocity range (mph)	5
Fresh/Salt Water	Saltwater
Fuel Level at Testing (gal)	80

**ENGINE SPECIFICATIONS**

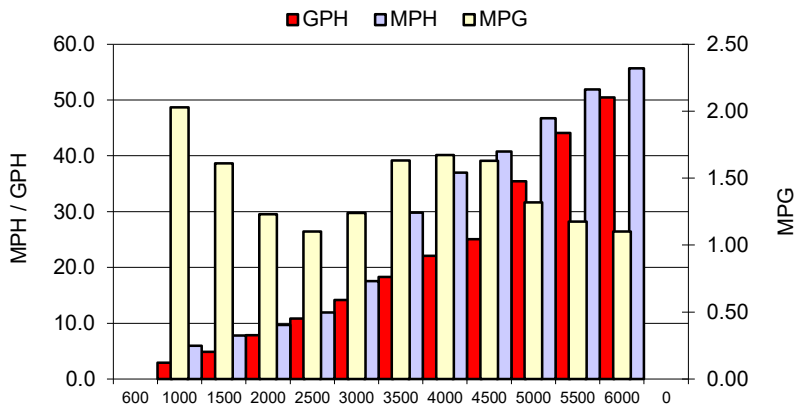
Number of Engines	2
Engine	V8 Verado
Horsepower	300
Cylinders	8
Drive or gear model and ratio	HD Camber 1.85
Mounting Bolt Hole	2,2
Engine Height (in)	1.0,1.0
Engine Setback (in)	1.0,1.0
Engine Length (in)	25,25

**PERFORMANCE SUMMARY**

Top Speed (mph @ rpm)	55.7	6000
Acceleration 0 - 20 mph (seconds)	4.38	
Acceleration 0 - 30 mph (seconds)	6.84	

**PROPELLER SPECIFICATIONS**

Mercury Name	Eneria ECO
Material	Stainless Steel
Pitch	19.0,19.0
Number of Blades	3

**PERFORMANCE CURVE**

**BOAT SPECIFICATIONS**

Region/s sold	
Manufacturer	sportsmansboats
Website	
Boat Model	302
Boat Type	Offshore Saltwater
Material	0
Length (ft)	30.2
Beam (ft)	10.4
Max hp Capacity	0
Fuel Tank Capacity (gal)	290
Steering Type	Joystick
Dry Boat Weight (lbs)	8245

**PERFORMANCE DATA**

RPM	SPEED	FUEL CONSUMPTION	FUEL CONSUMPTION	RANGE
RANGE	MPH	GPH	MPG	MILES
600	0.0	0.0	0.00	0
1000	6.0	3.0	2.03	588
1500	7.8	4.9	1.61	467
2000	9.7	7.9	1.23	357
2500	11.9	10.8	1.10	319
3000	17.6	14.2	1.24	359
3500	29.8	18.3	1.63	473
4000	37.0	22.1	1.67	485
4500	40.8	25.0	1.63	472
5000	46.7	35.4	1.32	383
5500	51.9	44.1	1.18	341
6000	55.7	50.5	1.10	319
0	0.0	0.0	0.0	0
0	0.0	0.0	0.0	0