

TEST CONDITIONS

| | |
|-----------------------------|--------------------|
| Test Date | 10/14/2022 |
| Test Conductor | Anton Francois + 2 |
| Boat Weight as Tested (lbs) | 9396 |
| Air Temperature (degrees F) | 80 |
| Elevation (ft) | 0 |
| Sea State | Calm |
| Wind Velocity range (mph) | 8 |
| Fresh/Salt Water | Saltwater |
| Fuel Level at Testing (gal) | 100 |

ENGINE SPECIFICATIONS

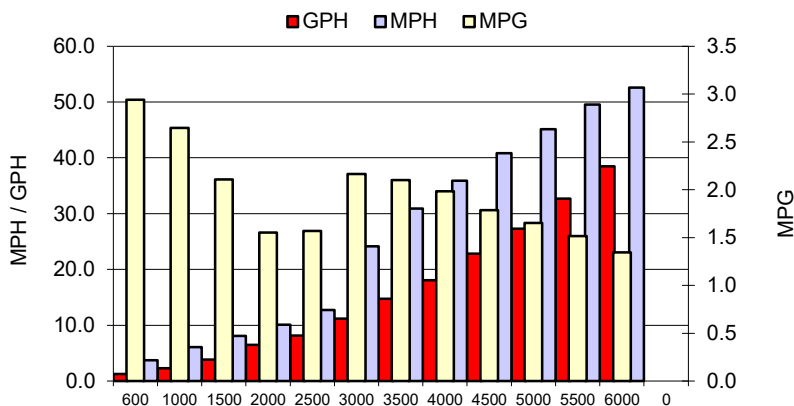
| | |
|-------------------------------|---------------|
| Number of Engines | 2 |
| Engine | V6 FourStroke |
| Horsepower | 225 |
| Cylinders | 6 |
| Drive or gear model and ratio | Standard 1.85 |
| Mounting Bolt Hole | 3,3 |
| Engine Height (in) | 1.0,1.0 |
| Engine Setback (in) | 1.0,1.0 |
| Engine Length (in) | 25,25 |

PERFORMANCE SUMMARY

| | | |
|-----------------------------------|------|------|
| Top Speed (mph @ rpm) | 52.6 | 6000 |
| Acceleration 0 - 20 mph (seconds) | 5.06 | |
| Acceleration 0 - 30 mph (seconds) | 7.64 | |

PROPELLER SPECIFICATIONS

| | |
|------------------|-----------------|
| Mercury Name | Enertia ECO |
| Material | Stainless Steel |
| Pitch | 18.0,18.0 |
| Number of Blades | 3 |

PERFORMANCE CURVE

BOAT SPECIFICATIONS

| | |
|--------------------------|--------------------|
| Region/s sold | |
| Manufacturer | sportsman |
| Website | |
| Boat Model | 282 open |
| Boat Type | Offshore Saltwater |
| Material | Material |
| Length (ft) | 28.5 |
| Beam (ft) | 9.1 |
| Max hp Capacity | 0 |
| Fuel Tank Capacity (gal) | 210 |
| Steering Type | Other |
| Dry Boat Weight (lbs) | 7224 |

PERFORMANCE DATA

| RPM | SPEED | FUEL CONSUMPTION | FUEL CONSUMPTION | RANGE |
|-------|-------|------------------|------------------|-------|
| RANGE | MPH | GPH | MPG | MILES |
| 600 | 3.8 | 1.3 | 2.9 | 617 |
| 1000 | 6.1 | 2.3 | 2.6 | 556 |
| 1500 | 8.1 | 3.8 | 2.1 | 443 |
| 2000 | 10.1 | 6.5 | 1.6 | 326 |
| 2500 | 12.7 | 8.1 | 1.6 | 329 |
| 3000 | 24.2 | 11.2 | 2.2 | 455 |
| 3500 | 30.9 | 14.7 | 2.1 | 441 |
| 4000 | 35.9 | 18.1 | 2.0 | 417 |
| 4500 | 40.8 | 22.8 | 1.8 | 375 |
| 5000 | 45.1 | 27.3 | 1.7 | 347 |
| 5500 | 49.5 | 32.7 | 1.5 | 318 |
| 6000 | 52.6 | 38.5 | 1.3 | 283 |
| 0 | 0.0 | 0.0 | 0.0 | 0 |
| 0 | 0.0 | 0.0 | 0.0 | 0 |