

TEST CONDITIONS

Test Date	4/14/2023
Test Conductor	Anton Francois
Boat Weight as Tested (lbs)	8330
Air Temperature (degrees F)	73
Elevation (ft)	0
Sea State	Calm
Wind Velocity range (mph)	5
Fresh/Salt Water	Saltwater
Fuel Level at Testing (gal)	100

ENGINE SPECIFICATIONS

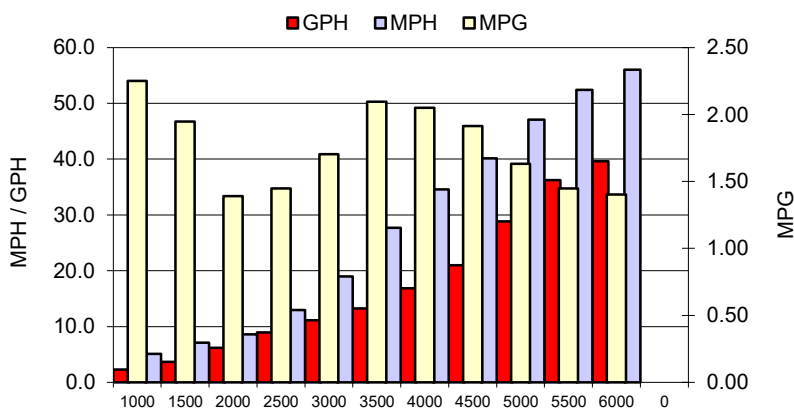
Number of Engines	2
Engine	V6 FourStroke
Horsepower	225
Cylinders	6
Drive or gear model and ratio	Standard 1.85
Mounting Bolt Hole	2,2
Engine Height (in)	1.0,1.0
Engine Setback (in)	1.0,1.0
Engine Length (in)	25,25

PERFORMANCE SUMMARY

Top Speed (mph @ rpm)	56	5963
Acceleration 0 - 20 mph (seconds)	4.82	
Acceleration 0 - 30 mph (seconds)	7.23	

PROPELLER SPECIFICATIONS

Mercury Name	Enertia
Material	Stainless Steel
Pitch	19.0,19.0
Number of Blades	3

PERFORMANCE CURVE

BOAT SPECIFICATIONS

Region/s sold	
Manufacturer	sportsman
Website	
Boat Model	262
Boat Type	Offshore Saltwater
Material	Material
Length (ft)	26.6
Beam (ft)	9.5
Max hp Capacity	0
Fuel Tank Capacity (gal)	145
Steering Type	Joystick
Dry Boat Weight (lbs)	5800

PERFORMANCE DATA

RPM	SPEED	FUEL CONSUMPTION	FUEL CONSUMPTION	RANGE
RANGE	MPH	GPH	MPG	MILES
1000	5.1	2.3	2.25	326
1500	7.1	3.7	1.95	282
2000	8.6	6.2	1.39	202
2500	13.0	9.0	1.45	210
3000	19.0	11.1	1.70	247
3500	27.7	13.2	2.09	304
4000	34.5	16.8	2.05	297
4500	40.2	21.0	1.91	278
5000	47.1	28.8	1.63	237
5500	52.4	36.2	1.45	210
6000	56.0	39.6	1.40	204
0	0.0	0.0	0.0	0
0	0.0	0.0	0.0	0