

TEST CONDITIONS

Test Date	8/29/2023
Test Conductor	Anton Francois +CS
Boat Weight as Tested (lbs)	5015
Air Temperature (degrees F)	90
Elevation (ft)	0
Sea State	Calm
Wind Velocity range (mph)	5
Fresh/Salt Water	Saltwater
Fuel Level at Testing (gal)	45

ENGINE SPECIFICATIONS

Number of Engines	1
Engine	V8 FourStroke
Horsepower	250
Cylinders	8
Drive or gear model and ratio	HD Camber 1.75
Mounting Bolt Hole	3
Engine Height (in)	1
Engine Setback (in)	1
Engine Length (in)	30

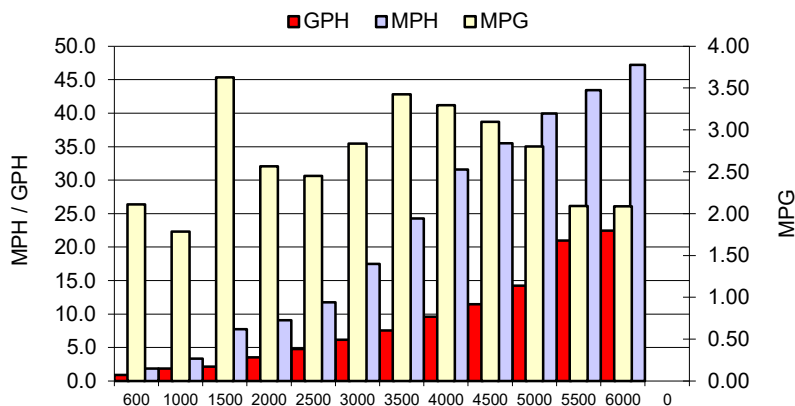
PERFORMANCE SUMMARY

Top Speed (mph @ rpm)	47.2	5948
Acceleration 0 - 20 mph (seconds)	3.86	
Acceleration 0 - 30 mph (seconds)	6.65	

PROPELLER SPECIFICATIONS

Mercury Name	Enertia
Material	Stainless Steel
Pitch	16
Number of Blades	3

PERFORMANCE CURVE



BOAT SPECIFICATIONS

Region/s sold	
Manufacturer	sportsman boats
Website	
Boat Model	232 open
Boat Type	Offshore Saltwater
Material	Material
Length (ft)	23.4
Beam (ft)	8.6
Max hp Capacity	0
Fuel Tank Capacity (gal)	106
Steering Type	Hydraulic Steering
Dry Boat Weight (lbs)	3600

PERFORMANCE DATA

RPM	SPEED	FUEL CONSUMPTION	FUEL CONSUMPTION	RANGE
RANGE	MPH	GPH	MPG	MILES
600	1.9	0.9	2.11	224
1000	3.4	1.9	1.79	189
1500	7.7	2.1	3.63	385
2000	9.1	3.5	2.56	272
2500	11.8	4.8	2.45	260
3000	17.5	6.2	2.84	301
3500	24.3	7.5	3.43	363
4000	31.6	9.6	3.30	349
4500	35.5	11.5	3.10	328
5000	39.9	14.3	2.80	297
5500	43.4	21.0	2.09	222
6000	47.2	22.5	2.09	221
0	0.0	0.0	0.0	0
0	0.0	0.0	0.0	0