

**TEST CONDITIONS**

Test Date	5/11/2023
Test Conductor	Anton Francois+ 1
Boat Weight as Tested (lbs)	6155
Air Temperature (degrees F)	80
Elevation (ft)	0
Sea State	chop
Wind Velocity range (mph)	15
Fresh/Salt Water	Saltwater
Fuel Level at Testing (gal)	115

**ENGINE SPECIFICATIONS**

Number of Engines	1
Engine	V10 Verado
Horsepower	400
Cylinders	10
Drive or gear model and ratio	Standard 2.08
Mounting Bolt Hole	5
Engine Height (in)	1
Engine Setback (in)	1
Engine Length (in)	25

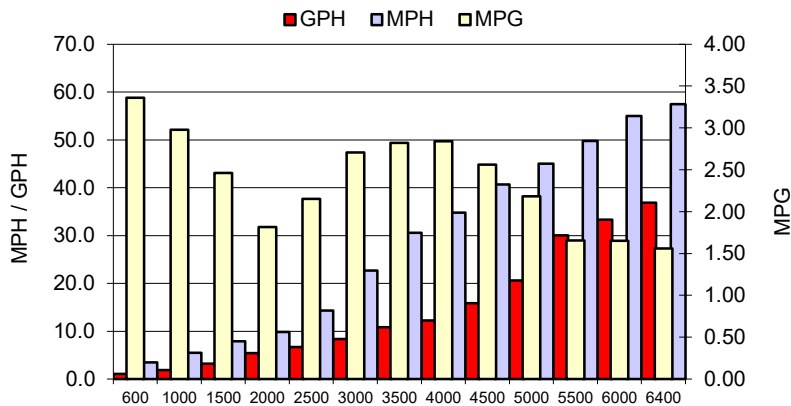
**PERFORMANCE SUMMARY**

Top Speed (mph @ rpm)	57.5	6363
Acceleration 0 - 20 mph (seconds)	4.59	
Acceleration 0 - 30 mph (seconds)	6.97	

**PROPELLER SPECIFICATIONS**

Mercury Name	Revolution X
Material	Stainless Steel
Pitch	22
Number of Blades	4

**PERFORMANCE CURVE**



**BOAT SPECIFICATIONS**

Region/s sold	
Manufacturer	sportsman boats
Website	
Boat Model	267
Boat Type	Inshore Saltwater
Material	Material
Length (ft)	26.7
Beam (ft)	9.2
Max hp Capacity	450
Fuel Tank Capacity (gal)	115
Steering Type	optimus EPS
Dry Boat Weight (lbs)	4300

**PERFORMANCE DATA**

RPM	SPEED	FUEL CONSUMPTION	FUEL CONSUMPTION	RANGE
RANGE	MPH	GPH	MPG	MILES
600	3.5	1.0	3.36	386
1000	5.5	1.8	2.98	343
1500	7.9	3.2	2.46	283
2000	9.9	5.4	1.82	209
2500	14.3	6.7	2.15	247
3000	22.7	8.4	2.71	311
3500	30.6	10.8	2.82	324
4000	34.8	12.2	2.84	326
4500	40.7	15.9	2.56	295
5000	45.0	20.6	2.18	251
5500	49.8	30.1	1.66	190
6000	55.0	33.3	1.65	190
6400	57.5	36.8	1.56	179
0	0.0	0.0	0.0	0

This data is internal to Brunswick.