

# BOAT HOUSE BULLETIN®



A Factual Report from Mercury Marine

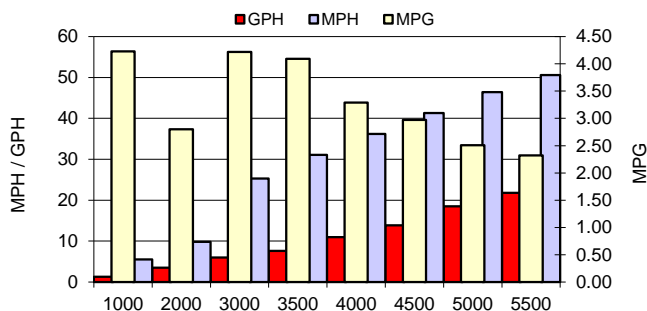
## TEST CONDITIONS

Test Date	2/12/2021
Test Conductor	AF/RALPH
Boat Weight as Tested (lbs)	3550
Air Temperature (degrees F)	47
Elevation (ft)	0
Sea State (calm / smooth / slight / moderate)	Smooth
Wind Velocity range (mph)	5
Fresh/Salt Water	Salt
Fuel Level at Testing (gal)	35

## PERFORMANCE SUMMARY

Top Speed (mph @ rpm)	52.4 @ 5950
Acceleration 0 - 20 mph (seconds)	3.6
Acceleration 0 - 30 mph (seconds)	5.3
Best Fuel Economy (mpg @ mph)	4.2 @ 25.3

## PERFORMANCE CURVE



## PERFORMANCE DATA

RPM	SPEED	FUEL CONSUMPTION	FUEL CONSUMPTION	RANGE	SOUND
RANGE	MPH	GPH	MPG	MILES	dB-A
1000	5.5	1.3	4.23		
2000	9.8	3.5	2.80		
3000	25.3	6	4.22		
3500	31.1	7.6	4.09		
4000	36.2	11	3.29		
4500	41.3	13.9	2.97		
5000	46.4	18.5	2.51		
5500	50.6	21.8	2.32		
5950	52.4	23.8	2.20		

## ENGINE SPECIFICATIONS

Number of Engines	ONE
Engine	MERCURY
Horsepower	250
Cylinders	V8
Drive or gear model and ratio	1.75

## BOAT SPECIFICATIONS

Region/s sold	<b>Worldwide</b>
Manufacturer	Sportsman boats
Website	<a href="http://www.sportsmanboatsmfg.com">www.sportsmanboatsmfg.com</a>
Boat Model	227 Masters
Boat Type	Offshore fishing
Material	FG
Length (in)	22' 4"
Beam (in)	8' 4"
Max hp Capacity	250
Fuel Tank Capacity (gal)	71
Steering Type	SEASTAR HYD
Dry Boat Weight (lbs)	2350
Mounting Bolt Hole (outboard)	3RD

## PROPELLER SPECIFICATIONS

Part Number	
Part Number	
Part Number	
Part Number	
Mercury Name	ECO Enertia
Material	SS
Diameter/Pitch	16 x 18P
Number of Blades	3

MERCURY MARINE PO BOX 1939 FOND DU LAC, WISCONSIN 54936-1939

©2015 Mercury Marine, All Rights Reserved. Results on individual boats may vary depending on many factors.

800-MERCURY MERCURYMARINE.COM