

**TEST CONDITIONS**

Test Date	5/17/2024
Test Conductor	Anton Francois +3
Boat Weight as Tested (lbs)	5200
Air Temperature (degrees F)	85
Elevation (ft)	0
Sea State	Calm
Wind Velocity range (mph)	5
Fresh/Salt Water	Saltwater
Fuel Level at Testing (gal)	22

**ENGINE SPECIFICATIONS**

Number of Engines	1
Engine	V8 FourStroke
Horsepower	250
Cylinders	8
Drive or gear model and ratio	Standard 1.75
Mounting Bolt Hole	2
Engine Height (in)	1
Engine Setback (in)	1
Engine Length (in)	25

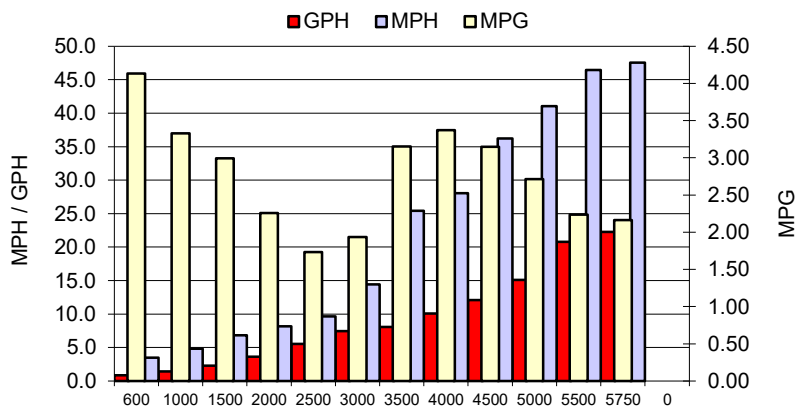
**PERFORMANCE SUMMARY**

Top Speed (mph @ rpm)	47.5	5750
Acceleration 0 - 20 mph (seconds)	5.06	
Acceleration 0 - 30 mph (seconds)	7.81	

**PROPELLER SPECIFICATIONS**

Mercury Name	Eneria
Material	Stainless Steel
Pitch	17
Number of Blades	3

**PERFORMANCE CURVE**



**BOAT SPECIFICATIONS**

Region/s sold	
Manufacturer	sportsmans boats
Website	
Boat Model	227 masters
Boat Type	Inshore Saltwater
Material	Material
Length (ft)	22.4
Beam (ft)	8.4
Max hp Capacity	0
Fuel Tank Capacity (gal)	65
Steering Type	Hydraulic Steering
Dry Boat Weight (lbs)	4263

**PERFORMANCE DATA**

RPM	SPEED	FUEL CONSUMPTION	FUEL CONSUMPTION	RANGE
RANGE	MPH	GPH	MPG	MILES
600	3.5	0.8	4.13	269
1000	4.8	1.5	3.33	216
1500	6.8	2.3	2.99	194
2000	8.2	3.6	2.26	147
2500	9.6	5.6	1.73	113
3000	14.4	7.4	1.94	126
3500	25.4	8.1	3.15	205
4000	28.1	10.1	3.37	219
4500	36.2	12.1	3.15	205
5000	41.1	15.1	2.72	177
5500	46.4	20.8	2.23	145
5750	47.6	22.3	2.16	141
0	0.0	0.0	0.0	0
0	0.0	0.0	0.0	0