

TEST CONDITIONS

Test Date	2/22/2024
Test Conductor	Anton Francois + 2
Boat Weight as Tested (lbs)	9690
Air Temperature (degrees F)	65
Elevation (ft)	0
Sea State	Calm
Wind Velocity range (mph)	5
Fresh/Salt Water	Saltwater
Fuel Level at Testing (gal)	100

ENGINE SPECIFICATIONS

Number of Engines	2
Engine	V8 Verado
Horsepower	300
Cylinders	8
Drive or gear model and ratio	HD Camber 1.85
Mounting Bolt Hole	3,3
Engine Height (in)	1.0,1.0
Engine Setback (in)	1.0,1.0
Engine Length (in)	25,25

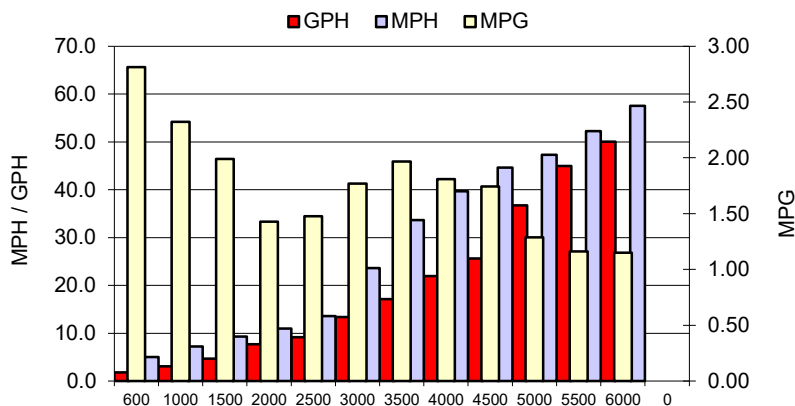
PERFORMANCE SUMMARY

Top Speed (mph @ rpm)	57.5	6012
Acceleration 0 - 20 mph (seconds)	3.79	
Acceleration 0 - 30 mph (seconds)	5.64	

PROPELLER SPECIFICATIONS

Mercury Name	Enertia ECO
Material	Stainless Steel
Pitch	19.0,19.0
Number of Blades	3

PERFORMANCE CURVE



BOAT SPECIFICATIONS

Region/s sold	
Manufacturer	sportsman
Website	
Boat Model	282 open
Boat Type	Offshore Saltwater
Material	0
Length (ft)	28.5
Beam (ft)	9.1
Max hp Capacity	0
Fuel Tank Capacity (gal)	210
Steering Type	Joystick
Dry Boat Weight (lbs)	7224

PERFORMANCE DATA

RPM	SPEED	FUEL CONSUMPTION	FUEL CONSUMPTION	RANGE
RANGE	MPH	GPH	MPG	MILES
600	5.0	1.8	2.81	590
1000	7.2	3.1	2.32	488
1500	9.3	4.7	1.99	418
2000	11.0	7.7	1.43	300
2500	13.6	9.2	1.48	310
3000	23.6	13.4	1.77	371
3500	33.7	17.1	1.97	413
4000	39.7	21.9	1.81	380
4500	44.6	25.6	1.74	366
5000	47.3	36.7	1.29	271
5500	52.2	45.0	1.16	244
6000	57.5	50.0	1.15	241
0	0.0	0.0	0.0	0
0	0.0	0.0	0.0	0