

TEST CONDITIONS

Test Date	2/7/2024
Test Conductor	Anton Francois +2
Boat Weight as Tested (lbs)	6372
Air Temperature (degrees F)	45
Elevation (ft)	0
Sea State	Choppy
Wind Velocity range (mph)	10
Fresh/Salt Water	Saltwater
Fuel Level at Testing (gal)	60

ENGINE SPECIFICATIONS

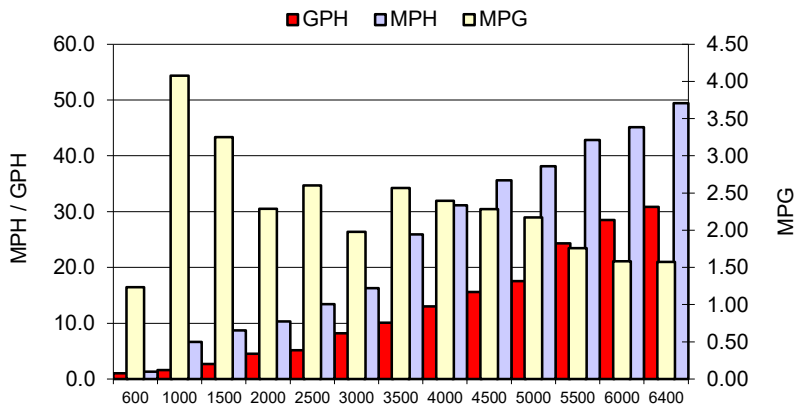
Number of Engines	1
Engine	V10 Verado
Horsepower	350
Cylinders	10
Drive or gear model and ratio	HD Camber 2.08
Mounting Bolt Hole	3
Engine Height (in)	1
Engine Setback (in)	1
Engine Length (in)	25

PERFORMANCE SUMMARY

Top Speed (mph @ rpm)	49.4	6400
Acceleration 0 - 20 mph (seconds)	4.13	
Acceleration 0 - 30 mph (seconds)	6.46	

PROPELLER SPECIFICATIONS

Mercury Name	Rev X
Material	Stainless Steel
Pitch	18
Number of Blades	4

PERFORMANCE CURVE

BOAT SPECIFICATIONS

Region/s sold	
Manufacturer	sportsman boats
Website	
Boat Model	252 open
Boat Type	Offshore Saltwater
Material	Material
Length (ft)	25.3
Beam (ft)	9.3
Max hp Capacity	0
Fuel Tank Capacity (gal)	128
Steering Type	Power Steering
Dry Boat Weight (lbs)	4672

PERFORMANCE DATA

RPM	SPEED	FUEL CONSUMPTION	FUEL CONSUMPTION	RANGE
RANGE	MPH	GPH	MPG	MILES
600	1.3	1.1	1.23	158
1000	6.6	1.6	4.08	522
1500	8.7	2.7	3.25	416
2000	10.3	4.5	2.29	293
2500	13.4	5.1	2.60	333
3000	16.3	8.2	1.98	253
3500	25.9	10.1	2.57	329
4000	31.1	13.0	2.40	307
4500	35.6	15.6	2.28	292
5000	38.1	17.5	2.17	278
5500	42.8	24.3	1.76	225
6000	45.1	28.5	1.58	203
6400	49.4	30.8	1.58	202
0	0.0	0.0	0.0	0