

TEST CONDITIONS

Test Date	11/21/2023
Test Conductor	Anton Francois +CS
Boat Weight as Tested (lbs)	5000
Air Temperature (degrees F)	70
Elevation (ft)	0
Sea State	Calm
Wind Velocity range (mph)	5
Fresh/Salt Water	Saltwater
Fuel Level at Testing (gal)	40

ENGINE SPECIFICATIONS

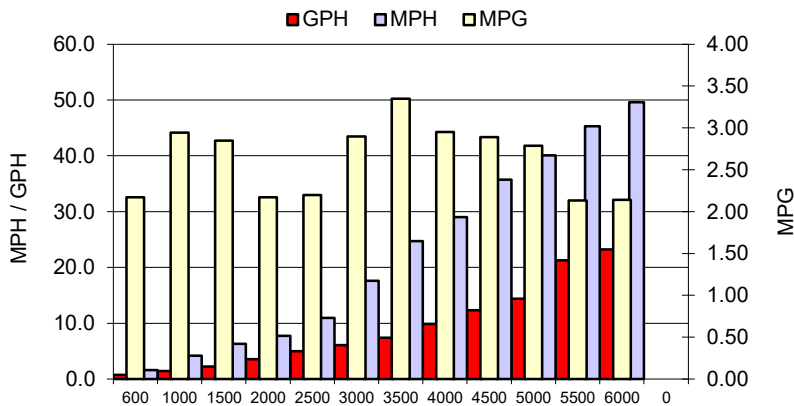
Number of Engines	1
Engine	V8 FourStroke
Horsepower	300
Cylinders	8
Drive or gear model and ratio	Standard 1.75
Mounting Bolt Hole	3
Engine Height (in)	1
Engine Setback (in)	1
Engine Length (in)	25

PERFORMANCE SUMMARY

Top Speed (mph @ rpm)	49.6	6005
Acceleration 0 - 20 mph (seconds)	3.89	
Acceleration 0 - 30 mph (seconds)	6.41	

PROPELLER SPECIFICATIONS

Mercury Name	Enertia
Material	Stainless Steel
Pitch	17
Number of Blades	3

PERFORMANCE CURVE

BOAT SPECIFICATIONS

Region/s sold	
Manufacturer	sportsman boats
Website	
Boat Model	232 open
Boat Type	Offshore Saltwater
Material	Material
Length (ft)	23.4
Beam (ft)	8.6
Max hp Capacity	0
Fuel Tank Capacity (gal)	106
Steering Type	Hydraulic Steering
Dry Boat Weight (lbs)	3600

PERFORMANCE DATA

RPM	SPEED	FUEL CONSUMPTION	FUEL CONSUMPTION	RANGE
RANGE	MPH	GPH	MPG	MILES
600	1.6	0.7	2.17	230
1000	4.2	1.4	2.94	312
1500	6.3	2.2	2.85	302
2000	7.8	3.6	2.17	230
2500	11.0	5.0	2.20	233
3000	17.6	6.1	2.90	307
3500	24.7	7.4	3.35	355
4000	29.0	9.8	2.95	313
4500	35.7	12.4	2.89	306
5000	40.1	14.4	2.79	295
5500	45.3	21.2	2.13	226
6000	49.6	23.2	2.14	227
0	0.0	0.0	0.0	0
0	0.0	0.0	0.0	0