

TEST CONDITIONS

Test Date	10/26/2023
Test Conductor	Anton Francois + 2
Boat Weight as Tested (lbs)	7623
Air Temperature (degrees F)	83
Elevation (ft)	0
Sea State	Calm
Wind Velocity range (mph)	5
Fresh/Salt Water	Saltwater
Fuel Level at Testing (gal)	70

ENGINE SPECIFICATIONS

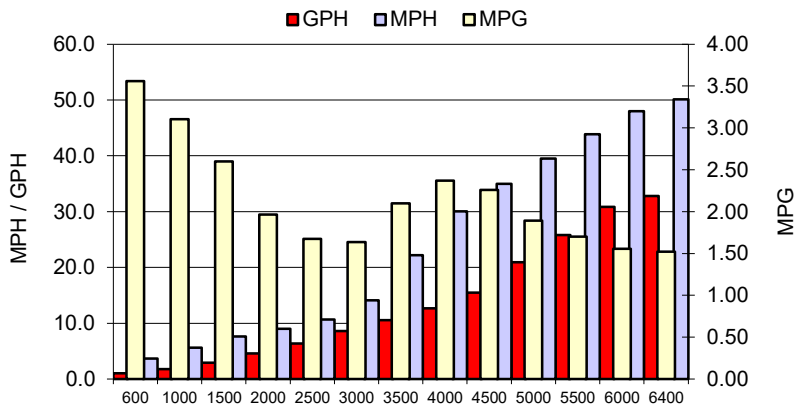
Number of Engines	1
Engine	V10 Verado
Horsepower	400
Cylinders	10
Drive or gear model and ratio	HD Camber 2.08
Mounting Bolt Hole	2
Engine Height (in)	1
Engine Setback (in)	1
Engine Length (in)	30

PERFORMANCE SUMMARY

Top Speed (mph @ rpm)	50.1	6384
Acceleration 0 - 20 mph (seconds)	5.42	
Acceleration 0 - 30 mph (seconds)	8.62	

PROPELLER SPECIFICATIONS

Mercury Name	Rev X
Material	Stainless Steel
Pitch	19
Number of Blades	4

PERFORMANCE CURVE

BOAT SPECIFICATIONS

Region/s sold	
Manufacturer	sportsman boats
Website	
Boat Model	261 heritage
Boat Type	Offshore Saltwater
Material	Material
Length (ft)	26.6
Beam (ft)	9.5
Max hp Capacity	0
Fuel Tank Capacity (gal)	145
Steering Type	Steer-by-Wire
Dry Boat Weight (lbs)	5668

PERFORMANCE DATA

RPM	SPEED	FUEL CONSUMPTION	FUEL CONSUMPTION	RANGE
RANGE	MPH	GPH	MPG	MILES
600	3.7	1.0	3.56	516
1000	5.6	1.8	3.11	450
1500	7.6	2.9	2.60	377
2000	9.0	4.6	1.97	285
2500	10.7	6.4	1.67	243
3000	14.1	8.6	1.64	237
3500	22.2	10.6	2.10	304
4000	30.0	12.7	2.37	343
4500	35.0	15.5	2.26	328
5000	39.5	20.9	1.89	274
5500	43.9	25.8	1.70	247
6000	48.0	30.9	1.55	225
6400	50.1	32.8	1.52	221
0	0.0	0.0	0.0	0